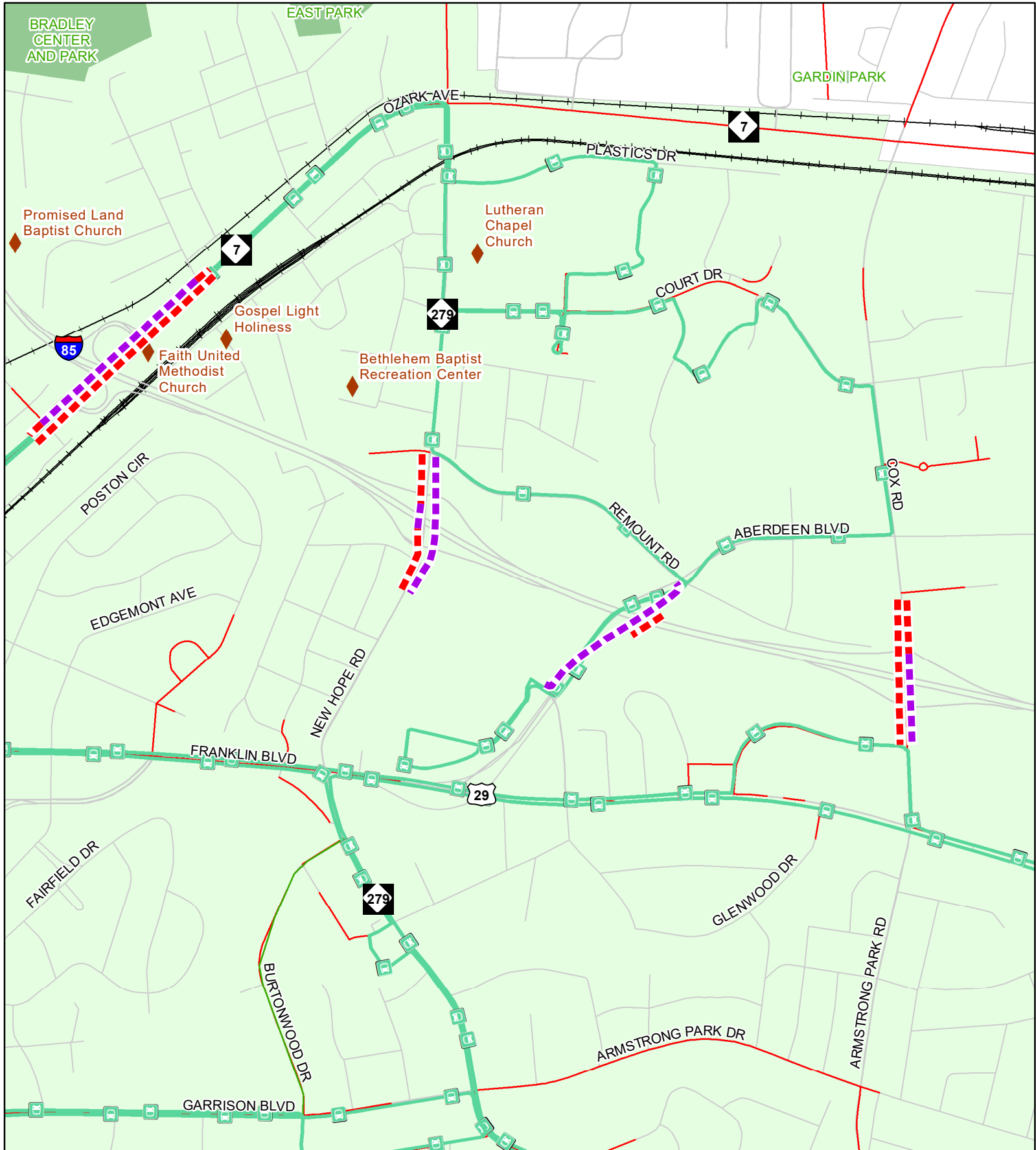


Legend

Existing Sidewalk	School	Railroad	Mount Holly
Existing Bicycle Route	Place of Worship	Municipality	
Existing Multiuse Path	Park	Belmont	
Prop Sidewalk	Bus Route	Gastonia	
Prop Bicycle Lane	Road	Lowell	
Prop Multiuse Path		McAdenville	

Proposed Bicycle and Pedestrian Facilities

I-85 FUTURES
 Gaston and Cleveland Counties
 Source: NCDOT, NC OneMap, ATLAS, HNTB (2022)



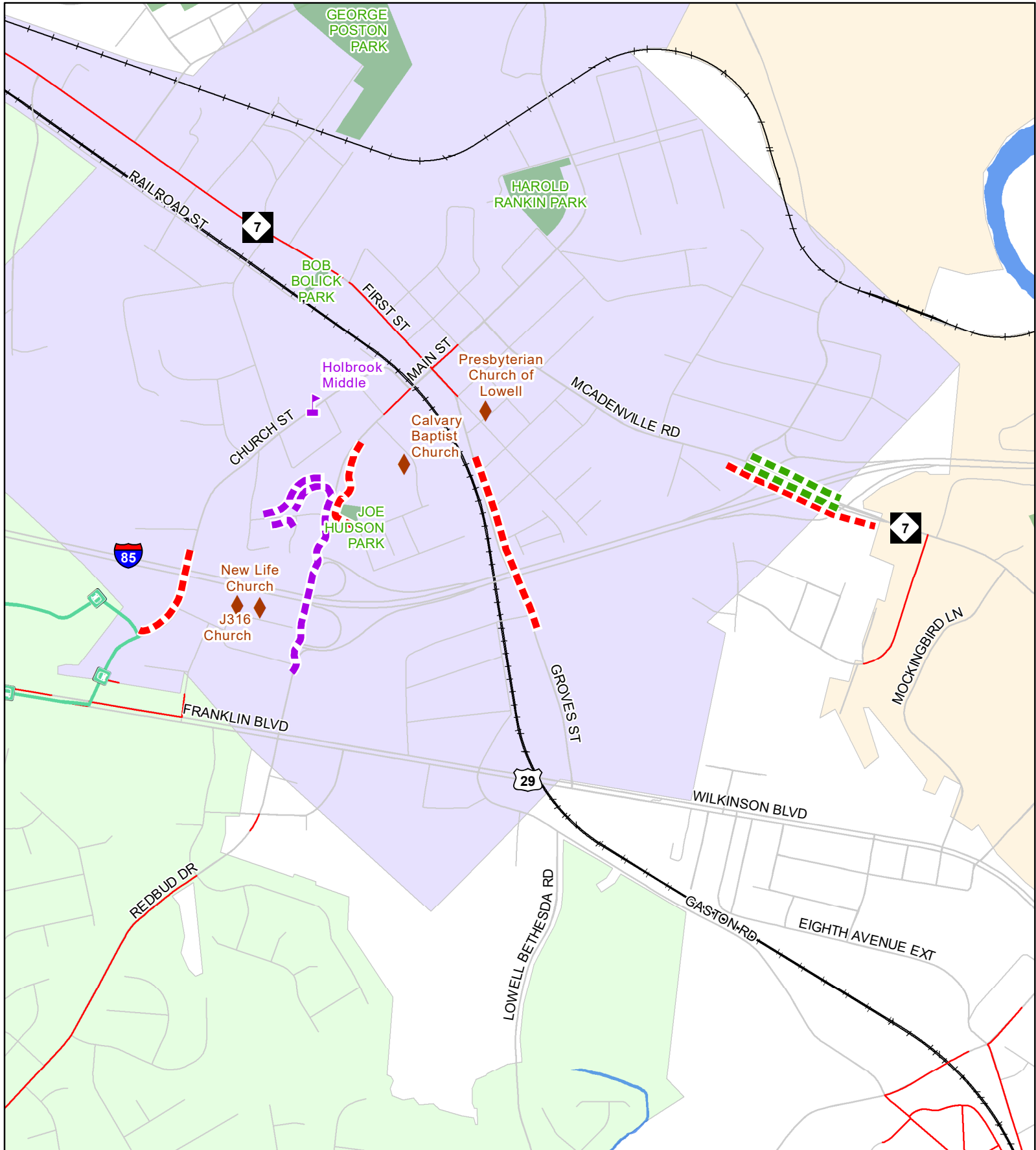
Legend

Existing Sidewalk	School	Railroad	Mount Holly
Existing Bicycle Route	Place of Worship	Municipality	
Existing Multiuse Path	Park	Belmont	
Prop Sidewalk	Bus Route	Gastonia	
Prop Bicycle Lane	Road	Lowell	
Prop Multiuse Path		McAdenville	

Proposed Bicycle and Pedestrian Facilities

0 500 1,000
Feet

I-85 FUTURES
Gaston and Cleveland Counties
Source: NCDOT, NC OneMap, ATLAS, HNTB (2022)

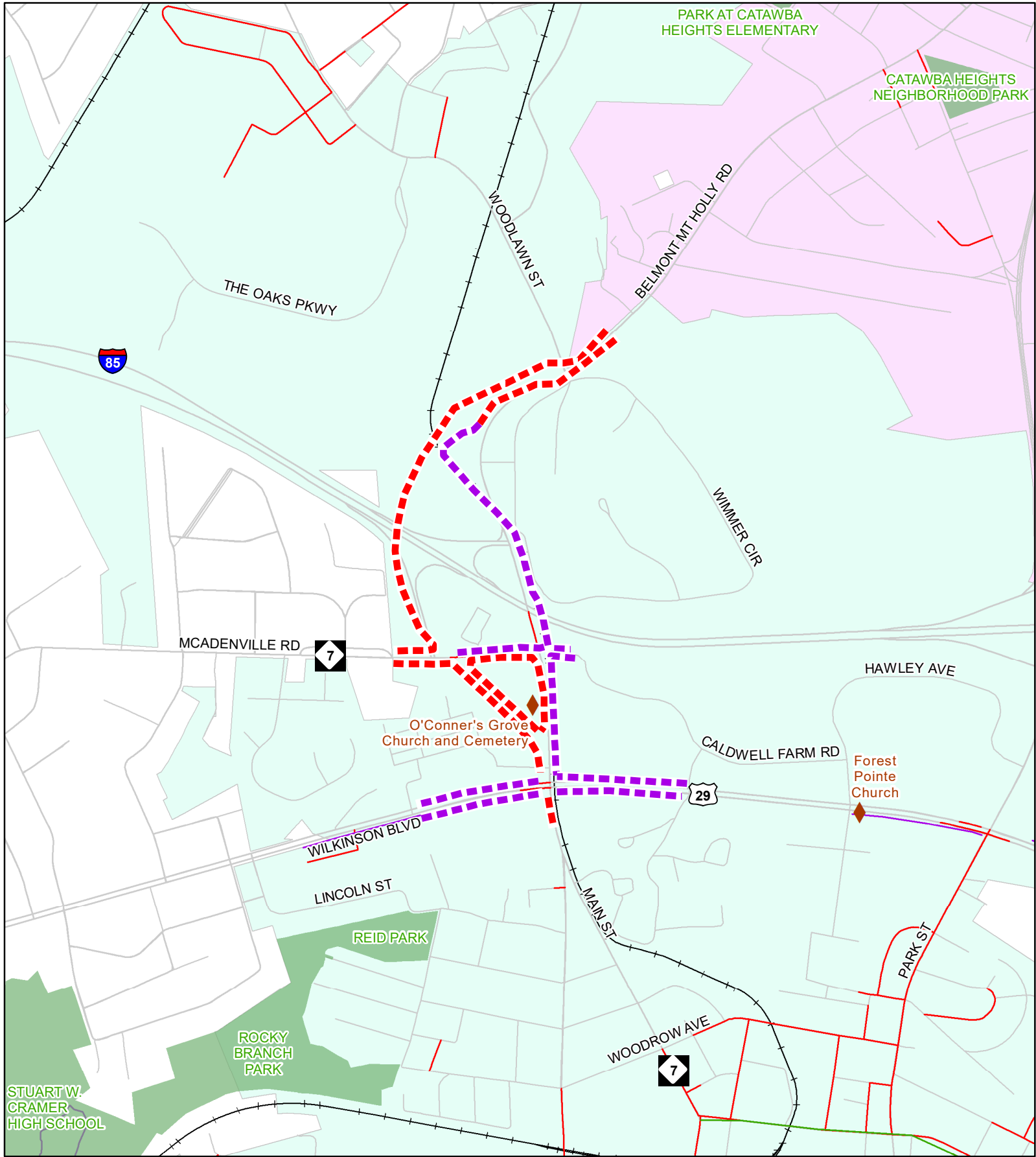


Legend

Existing Sidewalk	School	Railroad	Mount Holly
Existing Bicycle Route	Place of Worship	Municipality	
Existing Multiuse Path	Park	Belmont	
Prop Sidewalk	Bus Route	Gastonia	
Prop Bicycle Lane	Road	Lowell	
Prop Multiuse Path		McAdenville	

Proposed Bicycle and Pedestrian Facilities

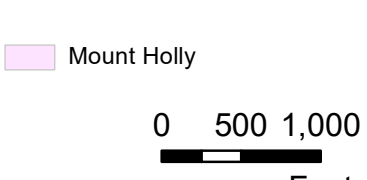
 I-85 FUTURES
 Gaston and Cleveland Counties
 Source: NCDOT, NC OneMap, ATLAS, HNTB (2022)



- Legend**
- Existing Sidewalk
 - Existing Bicycle Route
 - Existing Multiuse Path
 - Prop Sidewalk
 - Prop Bicycle Lane
 - Prop Multiuse Path
 - 🏫 School
 - 🏛️ Place of Worship
 - 🌳 Park
 - 🚌 Bus Route
 - Road

- Railroad
- Municipality**
- Belmont
 - Gastonia
 - Lowell
 - McAdenville

- Mount Holly



Proposed Bicycle and Pedestrian Facilities



I-85 FUTURES
Gaston and Cleveland Counties

Source: NCDOT, NC OneMap, ATLAS, HNTB (2022)